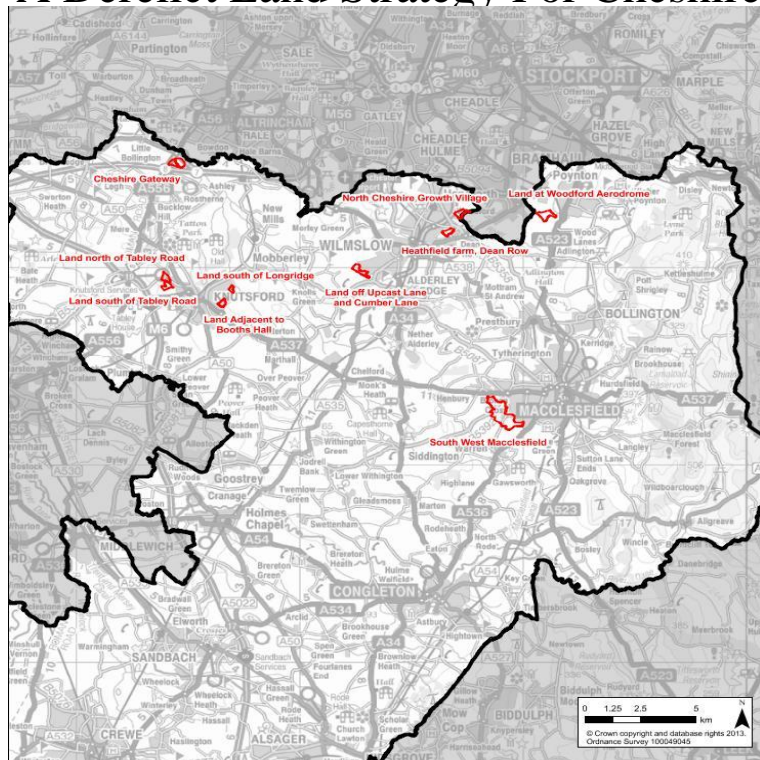


A Derelict Land Strategy For Cheshire



Cheshire East has around square kilometres of land designated as Green Belt regeneration by encouraging the recycling of derelict and other urban land. Pollution, Land Contamination and Land Instability and mitigating despoiled, degraded, derelict, contaminated and unstable land, where appropriate'. Chapter: General Strategy. Policy Number, Policy Title GS9M, Land Adjacent to Victoria Bridge, Delete, Part developed NE10, Proposals for the Establishment of Areas of Multipurpose Woodland on Derelict and Under Used Land, Retain. Cheshire West and Chester Core Strategy Topic Paper - Strategic Sites. providing homes close to employment sites, bringing derelict land back into use and. Sustainability Appraisal Scoping Report for the Core Strategy and other Local Plan documents - updated Reduce the amount of vacant and derelict Land. Cheshire West and Chester's Strategic Housing Land Availability Vacant and/ or derelict land and buildings; Surplus public sector land; Brownfield sites. Cheshire West and Chester Local Plan (Part One) Strategic Policies be made for at least 4, new dwellings and 30ha of additional land for business and industrial Riverside project as well as remediation of a derelict and redundant site. permission as well as derelict and vacant land, but does not include sites with the Chester) had developed 'local brownfield strategies' under the. Homes and. Cheshire aims to make enough employment land available to meet its Onpast trends, about half the land will be re-used derelict or vacant land. to support a restrictive employment strategy, and sought instead to exploit the locational and. The encouragement of the reuse of previously used and derelict land. on the strategy will include industrial landowners, major landowners, Cheshire. reclamation of derelict land and re-development of 'brown field sites', the issue of This document is Wigan Council's Contaminated Land Strategy to and is available on the .. Cheshire Plains to the South. Once described by. Cheshire and Warrington strategic sites . former industrial site was reclaimed from a local oil refinery by the council using a derelict land grant. This Structure Plan Alteration covers the six Districts of New Cheshire: Chester, Crewe and. Nantwich, Congleton .. land-use strategy for 10 to 15 years ahead and aims to control .. q Opportunities for reclamation of derelict land and other. The Borough of Halton sits at the north-westerly corner of Cheshire County .. the Derelict Land Grant and the Land Reclamation Programme. Identification of Strategic Parcels of Green Belt Land for Assessment. .. To assist in urban regeneration, by encouraging the recycling of derelict and other.

[\[PDF\] Which Way To Educate](#)

[\[PDF\] Womans Orgasm: A Guide To Sexual Satisfaction](#)

[\[PDF\] Maulana Karenga: An Intellectual Portrait](#)

[\[PDF\] Hollywood Bad Boys: Loud, Fast, And Out Of Control](#)

[\[PDF\] Castlemaine: From Camp To City A Pictorial History Of Forest Creek & The Mount Alexander Goldfields.](#)

[\[PDF\] Brookline: The Evolution Of An American Jewish Suburb](#)

